

Cable Installation & Site Equipment



Table of Contents

Product	Code	Page
Compact 90mm Bridge Type Cable Roller	90287	<u>4</u>
Heavy Duty 130mm Ladder Rack Cable Roller	90286	<u>4</u>
Heavy Duty Triple Corner Cable Roller	90288	<u>4</u>
V Type Lead In Pipe/Cable Roller	90291	<u>5</u>
Edge Mount Manhole Lead In Cable Roller	90290	<u>5</u>
Edge Mount Manhole Lead In Cable Roller	90292	<u>5</u>
Bell Mouths	90296	<u>6</u>
Cylindrical Duct Brushes	90293	<u>6</u>
Foam Pigs	90294	<u>6</u>
Wire Brush Pig	90295	<u>6</u>
The 4.5mm Diameter Cobra Rod	90304	<u>7</u>
The 9mm Diameter Cobra Rod	CR9	<u>7</u>
The 6.0mm Diameter Cobra Rod	cr1	<u>7</u>
Horizontal Drum Dispenser	DD1	<u>8</u>
Roll on Cable Drum Rotator	DR1	<u>8</u>
Cable Drum Lifter	90302	<u>8</u>
Cable Drum Roller	90298	<u>9</u>
Braked Drum Stand	90299	<u>9</u>
Hydraulic Drum Jacks	HDJ	<u>9</u>
CAT & Genny Cable Avoidance Tools	CAT4	<u>10</u>
Insulated Newcastle Drainer	16SSPFINS	<u>11</u>
Insulated Treaded Spade	TSSPFINS	<u>11</u>
Insulated Clay Grafter	CGSSPFINS	<u>11</u>
Insulated Taper Mouth Spade	2TSSPFINS	<u>11</u>
Insulated Round Mouth	2RSSPFINS	<u>11</u>
Insulated GPO Trencher	TRSSPFIN	<u>11</u>
Insulated Post Hole /Rabbiting Spade	POSSPAFGINS54	<u>11</u>
Insulated Shove-Holer	POSTFGINS54	<u>11</u>
Insulated Square Mouth	2SSPFINS	<u>11</u>
Insulated Post Hole /Rabbiting Spade	POSSPAFGINS54	<u>12</u>
Insulated Kidney Punner	KIDPUNSFGIN	<u>12</u>
Insulated 10lb Square Rammer	10SRFGINS	<u>12</u>
Insulated GPO Digging Bar	DIGBARINS	<u>12</u>
Insulated Chisel and Point	216332	<u>12</u>

Product	Code	Page
Insulated Fork	SFSSPFINS	<u>12</u>
MILWAUKEE HYDROPASS STICK WATER PUMP	M12BSWP-0	<u>13</u>
Cable Jointers Water Pump	HS2-4S	<u>13</u>
Tripod Flexible Road Works Signs	90316	<u>14</u>
Folding Plastic Road Works Signs	90320	<u>14</u>
Road Cone Signs	90319	<u>14</u>
Metal Frame Road Works Signs	90321	<u>14</u>
Stop Works/ Stop Go Lollipop	SE_SWLP	<u>14</u>
Pigtail Posts	701158	<u>15</u>
Red Barrier Chain	701156	<u>15</u>
Red White Barrier Tape	701157	<u>15</u>
Watchman Barrier System	65200612	<u>15</u>
Workgate 4-Gate System	65200611	<u>15</u>
Red Barrier With Feet	65200610	<u>16</u>
OVERHEAD POWER LINE GOALPOSTS - HEIGHT	OHLGP	<u>16</u>
Pop Up Road Cones	90318	<u>16</u>
Road Cones	90317	<u>16</u>
Non Conductive Jointing Umbrella	JU	<u>17</u>
Cable Jointers Umbrella Clamp	UUC	<u>17</u>
Square Pop Up Tents	90315	<u>18</u>
Triangular Pop Up Tents	90314	<u>18</u>
Atlas Copco TT Breaker	90327	<u>19</u>
Breaker Steels	90307	<u>19</u>
Band IT	90324	<u>19</u>
PVC Galvanized Band	90323	<u>19</u>
Out Rigger Mud Pad	ORMP	<u>20</u>
Outrigger Pads	90322	<u>21</u>
Ground Mats	90326	<u>22</u>
1KW Pure Sine Wave Generator	HY1000Si	<u>22</u>
Honda EU70iS Petrol Inverter Generator	EU70iS	<u>22</u>
Peli Rack Mointed Worklight	9410L	<u>23</u>
Surabeam S4 Dual Optic Head Light	S4	<u>24</u>
V3 Pro Rechargeable	V3Pro	<u>24</u>
V4 Pro Rechargeable	V4Pro	<u>24</u>
Q7R Rechargeable Torch	Q7R	<u>25</u>



Compact 90mm Bridge Type Cable Roller

The SLR2 is a compact cable roller for use in narrow trenches and/or in confined areas.

- Heavy Duty Tubular Frame Straight Line Bridge Roller
 - Fitted with hoops to fit over previously laid cables
 - 76mm Diameter Aluminium Roller
 - Oil impregnated maintenance free bushes fitted
 - Bright Zinc Plated Finish
 - 90mm diameter Cable Capacity
- Size 27.5cms Long x 15cms Wide x 18cms High*
- Weight 2.5 Kg

Heavy Duty 130mm Ladder Rack Cable Roller

The SLR11 is an heavy duty cable roller for use in most cable laying applications including ladder rack installations,

Heavy Duty Tubular Frame Straight Line Roller
110mm Diameter Large Waisted Steel Roller
Sealed roller bearing fitted
Bright Zinc Plated Finish

130mm diameter Cable Capacity

Size 40cms Long x 22.5cms Wide x 22.5cms High
Cross flats set at 300mm to suit ladder rack rungs
Weight 4.00 Kg



Heavy Duty Triple Corner Cable Roller

The BR3 is an heavy duty Triple Corner Cable Roller

These can be used singularly or linked together using Link Pins to form a full bend.

All the Bend Roller range have the same link points to facilitate various bend/roller configurations

- Heavy duty corner roller from tubular sections
- 3 off 110mm Diameter Large Waisted Steel Rollers*
 - Sealed roller bearing fitted
 - Zinc Plated Finish
 - Universal link pin mount positions
- Size 36cms Long x 30cms Wide x 32cms High
 - Weight 8.5 Kg



V Type Lead In Pipe/Cable Roller

The V style cable roller leads the cable from the drum into the trench,

This roller also doubles up as a pipe roller and can be positioned in the trench itself



- Heavy steel section construction
- Can be used as a Pipe Roller or Cable Roller 60mm Diameter steel Rollers
- Sealed roller bearings fitted
- Incorporates spring loaded shafts for easy replacement
- Zinc plated Finish

Three Sizes Available

- Size 50cms Long x 40cms Wide x 25cms High (Small)
- Size 85cms Long x 60cms Wide x 44cms High (Medium)
- Size 105cms Long x 60cms Wide x 44cms High (Large)

Edge Mount Manhole Lead In Cable Roller

The MR4 manhole cable roller leads the cable from the drum into the jointbox/manhole or the winch bond out of the manhole.

The cable roller is suitable for cables of upto 130mm

- Heavy duty tubular steel construction
- 3 off 110mm Diameter Steel Roller*
- Sealed precision roller bearings fitted
 - Zinc plated
- Size 57cms Long x 21cms Wide x 40cms High
 - Weight 10 Kg



Edge Mount Manhole Lead In Cable Roller

The MR1 manhole cable roller leads the cable from the drum into the jointbox/manhole or the winch bond out of the manhole.

The roller has 2 hooks for location on the manhole edge.

- Heavy steel section construction
- 76mm Diameter Aluminium Roller*
- Oil impregnated maintenance free bushes fitted
- Sealed precision roller bearings fitted
- Zinc plated or Powder Coated Finish
- Base Size 23cms Long x 13cms Wide
 - Weight 3 Kg



Bell Mouths

Steel Hinged Bellmouths are inserted into ducts and secured in position with an expansion bolt.

Standard sizes are below, all sizes are available with a guild roller fitted, simply add an "R" after the code ie SB1R

SB1 55-63mm ,SB2 76-82mm ,SB3 89-95mm

SB4 97-104mm ,SB5 115-124mm SB6 146-155mm

SB7 170-185mm ,SB8 198-220mm



Cylindrical Duct Brushes

Cylindrical Duct Brushes are fitted with steel rotating fixing eyes each end.

Standard sizes are :-

CDB1- 57mm

CDB2- 80mm

CDB3- 86mm

CDB4- 95mm

CDB5-108mm

CDB6-150mm

CDB7-200mm



Foam Pigs

Foam Pigs are used to clear dirt and excess water from pipes.

Available in sizes from 2" - 18" in diameter, these can be supplied with plastic drive plates or with wire tow ropes



Wire Brush Pig

Designed to remove corrosion and loose debris from Steel Pipes.



WPB1 - 80mm (3")

WPB2 - 100mm (4")

WPB3 - 125mm (5")

WPB4 - 150mm (6")

WPB5 - 200mm (8")

WPB6 - 250mm (10")



The 4.5mm Diameter Cobra Rod comes on a free standing frame (size L-400mm W-200mm H-480mm) and is supplied c/w brass guide .

Part No	Size	Length
CR4.5-40	4.5mm	40m
CR4.5-60	4.5mm	60m
CR4.5-80	4.5mm	80m
CR4.5-100	4.5mm	100m

The 6.0mm Diameter Cobra Rod

The 6.0mm Diameter Conduit Snake comes on a free standing frame (size L-550mm W-220mm H- 650mm) and is supplied c/w brass guide tip.

Part No	Size	Length
CR6-60	6.0mm	60m
CR6-80	6.0mm	80m
CR6-100	6.0mm	100m
CR6.120	6.0mm	120m
CR6-150	6.0mm	150m



The 9mm Diameter Cobra Rod

The 9mm Diameter Cobra Rod comes on a free standing frame size L-780mm W-450mm (over tyres) H- 830mm) and is supplied c/w brass guide .

Part No	Size	Length
CR9-60	9mm	60m
CR9-80	9mm	80m
CR9-100	9mm	100m
CR9-120	9mm	120m





Horizontal Drum Dispenser

The DD1 Horizontal Drum Dispenser is a very versatile product for paying out cable.

The unit was primarily designed to enable cable to be dispensed directly from contractors vans, lorry backs or rail carriages but can also be used to payout cable directly from the floor

- Heavy Duty Structure
- Extremely compact and light weight
- Can be carried with one hand
- 14 Kg weight
- Bright Zinc Plated Finish

Roll on Cable Drum Rotator

DR1 light weight Cable Drum Rotator is suitable for a range of Drum diameters up to 800mm. The drum roller is now suitable for drums of upto 620mm wide and has 4 lateral roller guides) to help prevent twisting of the drum.

- Capacity 200Kg
- Max drum size 800mm
- Min Drum Size 300mm
- Drum Width 620mm
- Base Size 62cms Long x 65cms Wide
- Weight 14 Kgs

DR1C

Compact Version Available : Base Size 51cms



Cable Drum Lifter

The DL5 cable drum lug with locking lever has been designed for the lifting, loading or transportation of steel or wooden cable reel drums.

The simple design allows the user to place the lugs either side of the drum, attach a two legged chain sling (not supplied) and lift.



Cable Drum Roller

The DR3 Heavy Duty Cable Drum Rotator is suitable for a range of Drum diameters upto 2200mm.

Drums are simply rolled up the ramp onto the adjustable rollers to allow it to spin freely

- Pressed/rolled steel construction
- 76mm Diameter heavy duty zinc plated rollers
 - Precision sealed roller bearings fitted
 - Capacity 1500Kg
 - Max drum size 2200mm
 - Min Drum Size 300mm
 - Drum Width is infinite
 - Zinc plated/painted finish

Braked Drum Stand

Unit provides facility to lift and dispense cable drums of up to 1500kg and 1650mm diameter x 1000 wide.

The stand is fitted with a disc brake for providing cable tension.

When not in use, the Braked Drum Stand knocks down for ease.



Hydraulic Drum Jacks

The hydraulic drum jack range is ideal for use in cable yards and on site alike, with a large drum range, the jacks are very flexible and raising of the drum is effortless.



Part No	Capacit	Base Size	Min dia	Max Dia	Weight Each
HDJ3	3000kg	700mm x 450mm	725mm	2500mm	60Kg
HDJ65	6500kg	900mm x 450mm	750mm	3000mm	90gKg
HDJ10	10000kg	900mm x 450mm	800mm	3500mm	120Kg

CAT & Genny Cable Avoidance Tools

C.A.T4[®] and Genny4[®] products provide a comprehensive range of Cable Avoidance Tools helping professionals to drive best locating practice, to reduce the number of cable strikes, and to dig more safely.

C.A.T4

The C.A.T4 is the standard model of the range. Using it with the Genny4 transmitter, experienced operators will be able to find more buried utilities, faster.

Genny4

Genny4's patented simultaneous dual-frequency signal output facilitates location of small diameter cables such as telecoms and street lighting, including spurs. All C.A.T4 locator models have patented technology to detect both signals simultaneously. The power boost function in Genny4 enables the locate signal to travel further and deeper, and couple onto utilities more easily.

Accessories

Genny Clamp

This clamp is used to apply a Genny signal to a specific cable or pipe. This is particularly useful where direct connection is not possible, or on live cables when these cannot be de-energized. Available in 2" (50mm), 4" (100mm) and 8.5" (220mm) diameters. Part No. 2" clamp: 10/TC2136-RD4

Part No. 4" clamp: 10/TC1769-RD4

Part No. 8.5" clamp: 10/RD4GT0235

Live Cable Connector

This accessory is used to apply the Genny signal to live cables. The Live Cable Connector may only be used by suitably qualified personnel. Maximum operating 440Vrms and CAT III rated.

Part No: 10/GENNY-LCC



ShockSafe BS8020:2012 Insulated



Insulated Newcastle Drainer



Insulated Clay Grafter



Insulated Treaded Spade



Insulated GPO Trencher



Insulated Round Mouth



Insulated Taper Mouth Spade



Insulated Square Mouth



**Insulated Post Hole /Rabbiting
Spade**



Insulated Shove-Holer



**Insulated Post Hole
/Rabbiting Spade**



Insulated Kidney Punner



Insulated 10lb Square Rammer



Insulated Fork



Insulated GPO Digging Bar



Insulated Chisel and Point

MILWAUKEE HYDROPASS STICK WATER PUMP



Milwaukee Battery 12v stick water pump delivers superior filtration for uninterrupted pumping in catch basins, water meter boxes, trenches, sump pump pits, and more.

This stick transfer pump has a 36" submersible aluminum barrel, this transfer pump provides the extension needed to reach water at the bottom of trenches and difficult to reach areas. Equipped with HydroPass filter technology, its 360° filter maximizes flow in heavy debris, minimizing downtime caused by clogging.

Cable Jointers Water Pump

The HS 24 is a versatile 50mm 2" submersible site drainage pump.
aluminium body, cast iron pump casing and an impact resistant PVC strainer base for durability during robust handling.
excellent wear resistance in site applications where water contains sand and silt in suspension
Features include a 403 stainless steel shaft and a stirring device to reduce blockages.
Used predominantly as contractor pumps on site drainage duties
Supplied with 10 metres of heavy duty, H07RN-F rubber power cable.





Tripod Flexible Road Works Signs

- Folding three-legged sign stand
- Accepts various sizes of sign panels including 600mm & 750mm Chapter 8 Triangle
- or 1050mm x 750mm Rectangular Sign and supplementary plate



Folding Plastic Road Works Signs

Manufactured from 100% recycled polypropylene.
With a robust and durable folding frame, the 750mm
The self adhesive sign faces are manufactured to Chapter 8
regulations

Triangle 4kg weight, Circle 5kg weight



Road Cone Signs

- Rectangular fits over the top of 75cm road Cone.
- Strap Signs are lightweight, easy to install sign system
ideal for use in any temporary Traffic situation



Metal Frame Road Works Signs

Metal Temporary Road Signs,
Stanchions & Frames

Stop Works/ Stop Go Lollipop



450mm Circular

Stop Works Or Stop Go

Fold Up Lollipop sign

including bag

Exclusion Zone Materials



Red Barrier Chain

Designed for use with posts or cones to form a multi-functional barrier system.

Can be fitted to matching coloured posts with base.



Pigtail Posts

Pigtail Posts for Exclusion Zones.

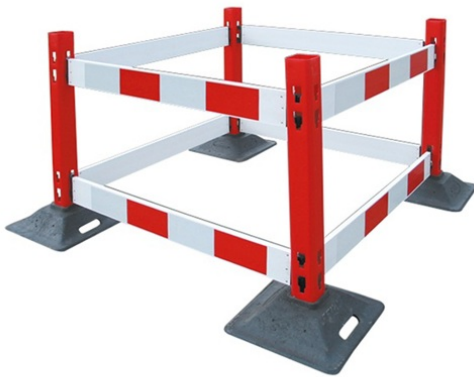
All plastic pigtail posts. 99cm (39")



Red White Barrier Tape

Heavy Duty
Barrier Tape Red & White 75mm X
500m

Watchman Barrier System



The most complete Chapter 8 barrier available to the industry. Manufactured in High Impact HDPE plastic that provides a strong and durable upright post and barrier system. Recycled heavy duty bases are stackable and can be embossed. System comes complete with 4 posts, 4 boards and 4 bases. Additional boards, bases or posts can be purchased separately

Workgate 4-Gate System

Robust mini barrier designed with contractors in mind. Each gate has a Chapter 8 reflective top panel, linked together with black clip-on hinges. Easily folds for quick deployment and lightweight for storage and handling.



Red Barrier With Feet



Easy to use, assemble and store. Available in 2m or 1.5m lengths.

The Titan has undergone extensive testing: Sub-zero impact testing;

Accelerated UV age testing.

Height including feet 1.2m approx

OVERHEAD POWER LINE GOALPOSTS - HEIGHT RESTRICTION SYSTEM

Non Conductive for warning vehicular traffic to the dangers of overhead cables and power lines on highways, roads, sites, wind farms etc.

System Includes

- Full kit comprises of 2 Telescopic Poles fitted with top crossbar hooks, 2 steel weighted bases and 25m of plastic bunting.



Pop Up Road Cones



Available in 410mm or 600mm

Packs flat for easy storage. Extends to workable height in seconds. High-visibility with reflective band.



Road Cones

450mm and 750mm
Standard Cones

Non Conductive Jointing Umbrella

- Standard Specification:
 - PVC Reinforced cover material 500gms (PVC coated Both sides) 100% waterproof
 - Flame Retardant (BS7837:1996)
 - Translucent
 - Fully Non-conductive - No metal parts
 - Fibreglass Telescopic handle (1.6 m to 2.7m)
- 6ft and 8ft Versions
- **Curtain option** Zipped Umbrella Curtain to produce Umbrella Tent
 - Curtain surround - 4oz Flame Retardant (BS7837:1996) Polyester/nylon



Cable Jointers Umbrella Clamp



G-clamp design
Ball joint for variable surface angles
Pole diameter 28mm to 35mm
Jaw opening – maximum 9cm
Umbrella pole locking screw, 360° rotation - positive locking increments, Solid and robust to cater for the utilities industry, Manufactured from high grade steel
Powder coated, Colour options - Red or Blue, Weight – 1.4kg



Square Pop Up Tents

Standard Specifications:

- 350gms Translucent PVC reinforced Flame Retardant BS7837:1996 allows natural light in
- Seams 100% waterproof
- Robust Die cast central joints
- Centre joint rubber protection (INTEGRATED) Non Conductivity & Finger protection
- Fibreglass framework
- Rubber protection feet for longer product life
- 3off Guy lines & Tent pegs
- All spare parts available
- No Loose components – integrated frame & Cover

Part No	Dimensions
100 5ST	1.0 x 1.0 x 1.6 m
125 5ST	1.25 x 1.25 x 2.0 m
150 5 ST	1.5 x 1.5 x 2.0 m
125/180 5ST	1.25 x 1.8 x 1.25 m
180 5ST	1.8 x 1.8 x 2.0 m
210 5 ST	2.0 x 2.0 x 2.1 m
250 5 ST	2.5 x 2.5 x 2.0 m
270 5 ST	2.7 x 2.7 x 2.0 m
300 5 ST	3.0 x 3.0 x 2.0 m
360 5 ST	3.6 x 3.6 x 2.2 m



Triangular Pop Up Tents

- Heavy-duty PU coated Flame Retardant BS7837:1996
- Polyester/Nylon 7oz - PU coated inside for easy cleaning
- Material thickness approx. twice of market standard)
- No Loose components (Erect in seconds)
- Non Conductive
- Die cast centre joints
- Fibreglass framework
- 2off Guy lines + Tent pegs
- Full height Front & Rear central Zipped entrances
- Company Logos upon requests are available

Part No	Dimensions
150PT	1.5 x 1.5 x 1.45m (Single Zip)
180PZ	1.8 x 1.8 x 1.7m (Double Zip)





Atlas Copco TT Breaker

Atlas Copco's petrol driven breakers cover a wide range of applications like breaking concrete, cutting asphalt, tamping ballast and more.

All without the need for power packs or cables. Cobra TT has been specially designed for tie tamping.

It works at a relatively high frequency and the impact energy has been optimized to prevent pulverization of ballast.

Breaker Steels

Full Range of Steels to Fit Standard Breakers



Band IT

Banding System for Signs Etc Stainless Steel and Coated



Out Rigger Mud Pad



The NEW MUD PAD Now the outrigger pad can be fastened directly to the outrigger while in use. This pad was designed for use in muddy conditions where a pad might be left behind because of how hard it is to retrieve, or injure a worker trying to remove the pad out of the mud

Product Features

- UHMW pad material
- Comes in high-visibility safety yellow
- Concave base to create and air pocket to stop suction
- Stainless steel wire rope handle
- 25mm Stainless Steel Wire Rope (2900kg. rated breaking strength) attachment lanyards.
- Lanyard securement link made from UHMW in safety red
- Stainless steel fasteners
- Only adds 05kg. of additional weight to standard outrigger pad design



Outrigger Pads

All pads feature weather and abrasion resistant labels noting your company name, SWL, weight, size, unique ID No. and source / date of production.

Unique Industry leading Safety Grip finish to reduce slippage issue of smaller new pads... standard on upper face of pads up to 600mm in size...available as an option on larger sizes

Unbreakable even under extreme loading...guaranteed

Water resistant; no weight gain due to water uptake or increased risk of frost induced failure Improved performance and longevity compared to timber

Easy manual handling of larger pad areas using easy to roll round pads and modular Sleepers Integral graded rope handles. Graded chains fitted to largest pads

Easy to clean by pressure washing, no risk to saturate / degrade pads UniMats™ HDPE range guarantees electric isolation

Excellent chemical resistance, Can be used in extreme weather conditions (-100°C to +80°C)

Stabilizer / outrigger foot location rebates / slots available to ensure central loading of pad

Size	Load Capacity	Weight	Load Spread Area
300 x 300 x 30mm	4 tonnes	2.6 kg	0.09 m ²
300 x 300 x 40mm	5 tonnes	3.4 kg	0.09 m ²
400 x 400 x 40mm	10 tonnes	6.1 kg	0.16 m ²
400 x 400 x 50mm	12 tonnes	7.6 kg	0.16 m ²

Ground Mats

HDPE Access Mats provide optimal protection and safety for work on vulnerable or unstable ground. They permit temporary access for vehicles and machines and our unique Safety Grip / Chevron Cut treatment ensures optimum grip during site operations.



1KW Pure Sine Wave Generator



- Pure sinewave output – Producing 1000w / 1kW.
- Lightweight & portable – Easy to transport at just 17kg.
- “Eco” mode – For improved fuel efficiency.
- Long running time – Power your equipment for up to 6.6hrs.
- 53cc recoil start engine – Easy starting and reliable..
- Quiet running – 58dBA @ 7m.
- Full LED display - Monitor the performance of the generator.

Honda EU70iS Petrol Inverter Generator

The Honda EU70is petrol generator features 7000W power output,
Electric start 4-stroke OHV engine, Unique oil alert system, Inverter technology

- Portable
- Super Silent Technology - Only 91 dB(a)
- Clean power - Suitable for computers and sensitive equipment
- EcoThrottle - Automatically adjusts engine speed to precisely match load to save fuel and engine life
- 7000W max watts output
- 5500W rated watts output
- 230v Output
- Frequency rating 50Hz
- KVA 7.0



Peli Rack Mounted Worklight

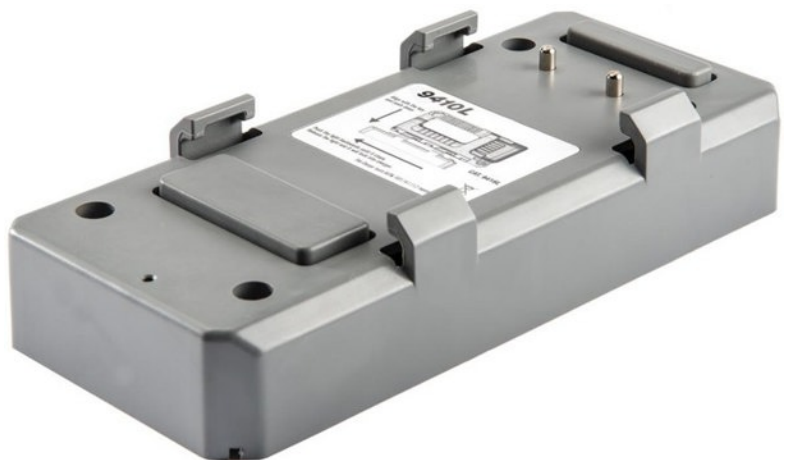


2207 lumens = brightest & lightest in its class

At less than 1.3kg and 2207 lumens, the new 9410L LED Lantern packs the power without the weight. Four LEDs, powered by the latest generation Lithium-Ion batteries illuminate a distance of 495 yards (453 meters). And it's loaded with innovative technology and features you have come to expect from Peli. The 9410L LED Lantern is one of the most compact, high output lanterns on the market.



Rack Mount Charger





Surabeam S4 Dual Optic Head Light

Suprabeams New Duo Head Lamp
Features 2 LEDs 1 Flood and 1 Spot
500lm for 5hrs 30min
USB Rechargeable but also able to use aaa batteries
Silicon Head Band enable attachment to safety helmet without clips
136gr
85m light range
Battery Reserve feature so no instant blackout



V3 Pro Rechargeable

500 Lumens Boost 2 hr Use
280 Lumens High 2 hr Use
6 Lumens Low 100 hr Use
Get You home feature @ 10% battery capacity it auto switches to low light output
184 gms , 245m Range
Spot and Zoom Function
USB & Mains Chargers



V4 Pro Rechargeable

800 Lumens Boost 1.45 hr Use
400 Lumens High 2 hr Use
12 Lumens Low 100 hr Use
Get You home feature @ 10% battery capacity it auto switches to low light output
195 gms , 250m Range
The V4pro rechargeable is the most technologically advanced headlamp in Suprabeam history.
USB & Mains Charging



Li-polymer battery



Silicone band



Multi Charging Bay



Extension cable

Accessories

Silicon Band Sticks to any helmet no clips needed ,
Extension lead for belt mounted battery,
battery charging bay

Q7R Rechargeable Torch

The Smallest most powerful torch yet from Suprabeam only 150mm long by 46mm dia

1000 Lumens Boost 2 hr 45 min Use

500 Lumens High 3 hr Use

200 Lumens Medium 8 hr Use

50 Lumens Low 37 hr Use

307 gms

345m Beam Range

Spot and Zoom Function

Comes completed with Case,

2 x Li-on 18.5wh batteries ,

Mains and USB Charger

Belt Pouch and Lanyard

Thermal Management Heat-sink the Q7xr will perform with a maximum light output till the battery is drained completely.



Suprabeam Q5 XR Rack Mounted Rechargeable Torch

Suprabeam's latest torch

Featuring:

Rack Mounted USB Charging

1000lm for 3hrs 40min on max power to 940hrs on the lowest setting

Flood and Spot Setting

Anodized, High Strength Aluminium

L135mm W 39mm

When the battery reaches the last 10% of its total capacity, its integrated Battery Reserve feature automatically fades the light down to approximately 10-15% of the headlamps maximum lumens output.



D4r worklight

**Flood & Spot ,Magnetic ,USB Charging,
180 deg adjustable
Runtime 7hrs
14000 lumens
IP65 Waterproof**



**1400
LUMENS**

Li-ion IP65 250g 120°/20°



W6R Worklight

This worklight offers incomparable versatility, with its 180° rotatable light panels and 90°

W6r can even light up in two directions at the same time, making it possible to light even large rooms with this worklight alone.

With its massive Li-ion battery lasts up to 14hrs on one charge

The Li-ion battery also features a powerbank function, with the built-in USB outlet.

IP54 rating making it dustproof and water resistant.

Battery pack can be used a power bank

**4600
LUMENS**

Li-ion IP54 2140g 2x180°



Tripod Available optional Extra

